



www.jeffreygross.co.uk

CARDIFF

VALE

CAERPHILLY

BRISTOL



Rowsby Court

PONTRENNAU



Well presented and spacious apartment perfect for those looking to get onto the property ladder or add to their property portfolio.

Comments by Ms Nadia Refae



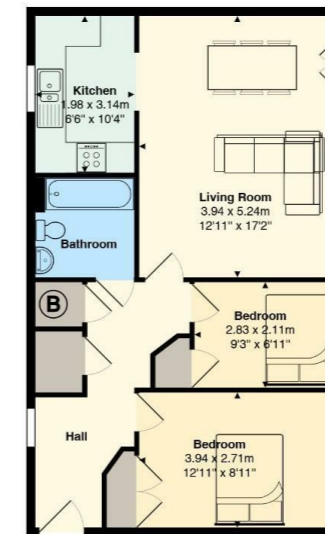
Property Specialist
Ms Nadia Refae
Valuer

nadia@jeffreygross.co.uk



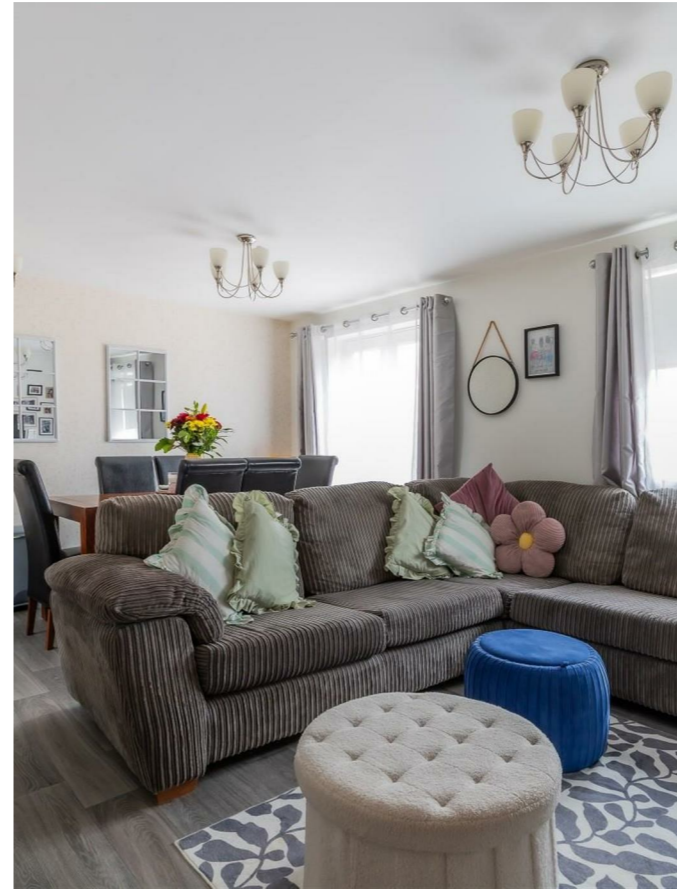
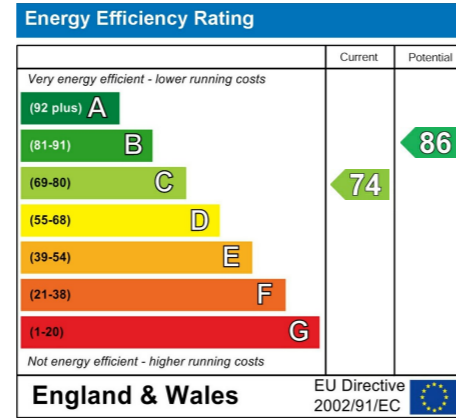
Comments by the Homeowner

Rowsby Court



Total Area: 61.8 m² ... 666 ft²

All measurements are approximate and for display purposes only



Rowsby Court

Pontprennau, Cardiff, CF23 8FG

Offers Over

£170,000



2 Bedroom(s)



1 Bathroom(s)



666.00 sq ft



Contact our
Llanishen Branch

02920 499680

Welcome to this charming second-floor flat located in the desirable Rowsby Court, Pontprennau, Cardiff. Spanning an impressive 666 square feet, this property offers a delightful blend of comfort and convenience, making it an ideal choice for both first-time buyers and those looking to downsize.

As you enter, you are greeted by an inviting open plan living and dining room, perfect for entertaining guests or enjoying a quiet evening at home. The layout is designed to maximise space and light, creating a warm and welcoming atmosphere. The two spacious bedrooms provide ample room for relaxation, ensuring a restful retreat at the end of the day.

Storage will never be an issue here, as the flat boasts plenty of storage options, allowing you to keep your living space tidy and organised. The well-appointed bathroom adds to the overall appeal, providing a functional yet stylish area for your daily routines.

One of the standout features of this property is its excellent transport links, making commuting to Cardiff city centre and beyond a breeze. Whether you are travelling for work or leisure, you will appreciate the convenience of nearby transport options.

In summary, this flat in Rowsby Court is a wonderful opportunity to enjoy modern living in a sought-after location. With its spacious rooms, ample storage, and great transport connections, it is sure to attract interest. Do not miss your chance to make this delightful property your new home.



Hall

Croesewir ceisiadau.

Bedroom One 12'11 x 8'11 (3.94m x 2.72m)

My Welsh medium secondary catchment area is Ysgol Gyfun Gymraeg Bro Edern

Bedroom Two 9'3 x 6'11 (2.82m x 2.11m)

Tenure

We are informed by the owner that the property is Leasehold.

Living Room 12'11 x 17'2 (3.94m x 5.23m)

EPC

C

Kitchen 6'6 x 10'4 (1.98m x 3.15m)

Additional Information

Bathroom

GROUND RENT
£150 per year

Council Tax Band

ANNUAL SERVICE CHARGE
£1800

School Catchment

LENGTH OF LEASE
128 years left

My English medium primary catchment area is Pontprennau Primary School
Note - Howardian Primary and Ysgol Gynradd Groes-wen Primary School catchment areas are yet to be established.

My English medium secondary catchment area is Llanishen High School

My Welsh medium primary catchment area is Ysgol Gynradd Gymraeg Pen Y Groes
Sylwer - Nid oes dalgyrch wedi ei sefydlu ar gyfer Howardian Primary nac Ysgol Gynradd Groes-wen Primary School eto.



CARDIFF

VALE

CAERPHILLY

BRISTOL

www.jeffreygross.co.uk